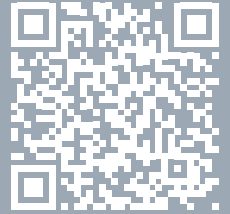


The Perfect Match

Technology
Partner

Schneider
Electric



Pepperl+Fuchs' H-System for EcoStruxure™
Triconex™ by Schneider Electric

Pepperl+Fuchs' Intrinsic Safety Termination
Board Solutions Customized for Tricon



Your automation, our passion.

 **PEPPERL+FUCHS**

Partnering for the Ultimate Solution in Safety and Success

Schneider Electric's partnership with Pepperl+Fuchs introduced a standard in industry safety many years ago. Pepperl+Fuchs' H-System for Tricon is listed by Triconex in the TAN48 as a fully tested, approved, and a widely adopted and preferred solution to date. The space-saving H-System barriers and termination boards provide the densest solution in the market when space for intrinsic safety barriers is a critical issue.



Termination boards are available with intrinsically safe wiring terminals and a Triconex-specific ELCO plug connector to standardize the cabinet layout and maximize spacing.

H-System Intrinsic Safety Modules for EcoStruxure™ Triconex™ - Tricon

- HiC modules with just 12.5 mm width, providing maximum cabinet space savings
- 1-channel HiC modules for single loop integrity
- 2- and 4-channel HiD modules for greater density and savings
- Customized termination board with specific ELCO connectors and H-System intrinsic safety modules for Triconex Tricon I/O safety system
- Prewired termination board with Tricon system cables minimizes planning and wiring effort

Plug and Play—for Every Process Control System

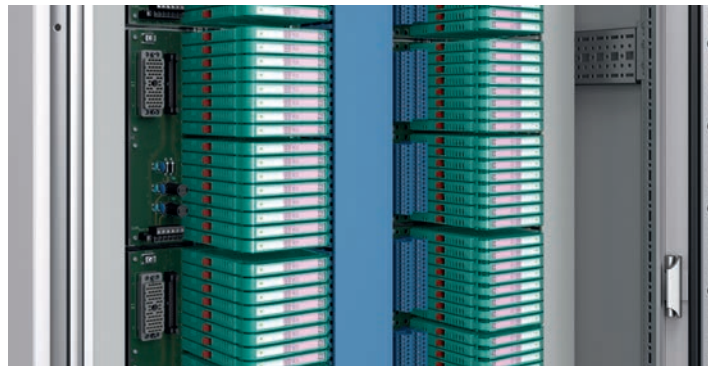
Pepperl+Fuchs' H-System isolated intrinsic safety barriers for EcoStruxure™ Triconex™ - Tricon plug into customized termination boards. The termination boards include the appropriate ELCO or Sub D plug-in connector for the new Tricon CX. H-System is the most thoroughly tested and documented intrinsic safety solution for a DCS or ESD system. This extensive testing ensures the highest level of safety, reliability, and confidence in your hazardous location ESD system. Customized termination board solutions are also available for EcoStruxure™ Triconex™ - Tricon and Foxboro DCS. Certified and supported worldwide, the H-System offers the only universal barrier solution for safety and control.



HiC modules snap onto termination boards using a plug & lock installation, requiring no tools or wiring. The narrow interface provides the highest possible signal density while low power dissipation keeps the cabinet cool.

Schneider Electric and Pepperl+Fuchs—Partners in Industrial Automation

Schneider Electric, worldwide specialist in energy management and industrial automation, and Pepperl+Fuchs, global explosion protection technology expert, have enjoyed a partnership for more than 30 years. As part of the Technology Partner Program (TPP), Pepperl+Fuchs also offers a complete range of automation solutions for Schneider Electric's EcoStruxure™ and the process automation industry.



Redefining termination board technology

A Seamless Portfolio

As a partner with Schneider Electric, Pepperl+Fuchs serves as the main vendor for:

- Intrinsic safety galvanic isolators
- Signal conditioners
- HART multiplexer solutions
- FOUNDATION Fieldbus
- PROFIBUS
- Purge and pressurization
- Special-purpose HMI solutions
- Intrinsically safe mobile devices



Triconex		Pepperl+Fuchs						
Tricon		Module				Termination Board		
Card	Channel	Type	Features	SIL	Channel	Type	Modules	Channel
Digital Input								
3503E (32) 3505E (32)	16 + 16	HIC2821	RelayOut	SIL 2	1	HiCTB16-TRI-DIIS-EL-PL	16	16
3504E (64) 3564 (64)	32 + 32	HIC2821	RelayOut	SIL 2	1	HiCTB32-TRI-DIIS-EL-PL	32	32
		HIC2822	RelayOut	SIL 2	2	HiCTB16-TRI-DIIS-EL-PL	16	32
		HID2824	RelayOut	SIL 2	4	HiDTB08-TRI-DIISQ-EL-SC	8	32
		HID2844	TransOut	SIL 2	4	HiDTB08-TRI-DIISQ-EL-SC	8	32
Digital Output								
3604E (16) 3624 (16)	16	HIC2873	40 mA @ 12 VDC, Test P. Immunity	SIL 3	1	HiCTB16-TRI-DOISS-EL-PL-Y1	16	16
		HIC2877	40 mA @ 11.2 VDC, Test P. Immunity	SIL 3	1	HiCTB16-TRI-DOISS-EL-PL-Y1	16	16
		HIC2883	45 mA @ 12 VDC, Test P. Immunity, LFT	SIL 3	1	HiCTB16-TRI-DOISS-EL-PL-Y1	16	16
		HID2872	40 mA @ 12 VDC, Test P. Immunity	SIL 3	2	HiDTB08-TRI-DOISD-EL-PL-Y1	8	16
		HID2876	40 mA @ 11.2 VDC, Test P. Immunity	SIL 3	2	HiDTB08-TRI-DOISD-EL-PL-Y1	8	16
		HIC5861	Safety Relay DTS, Non-IS, LFT	SIL 3	1	HiCTB16-TRI-DOISS-EL-PL-Y1	16	16
		HIC5863	Safety Relay ETS, Non-IS, LFT	SIL 3	1	HiCTB16-TRI-DOISS-EL-PL-Y1	16	16
3625 (32) 3664 (32)	16 + 16	HIC2873	40 mA @ 12 VDC, Test P. Immunity	SIL 3	1	HiCTB16-TRI-DOISS-EL-PL-Y1	16	16
		HIC2877	40 mA @ 11.2 VDC, Test P. Immunity	SIL 3	1	HiCTB16-TRI-DOISS-EL-PL-Y1	16	16
		HIC2883	45 mA @ 12 VDC, Test P. Immunity, LFT	SIL 3	1	HiCTB16-TRI-DOISS-EL-PL-Y1	16	16
		HID2872	40 mA @ 12 VDC, Test P. Immunity	SIL 3	2	HiDTB16-TRI-DOISD-EL-PL-Y2	16	32
		HID2876	40 mA @ 11.2 VDC, Test P. Immunity	SIL 3	2	HiDTB16-TRI-DOISD-EL-PL-Y2	16	32
		HIC5861	Safety Relay DTS, Non-IS, LFT	SIL 3	1	HiCTB16-TRI-DOISS-EL-PL-Y1	16	16
		HIC5863	Safety Relay ETS, Non-IS, LFT	SIL 3	1	HiCTB16-TRI-DOISS-EL-PL-Y1	16	16
		HIC2873	40 mA @ 12 VDC, Test P. Immunity	SIL 3	1	HiCTB32-TRI-DOISS-EL-PL-Y1	32	32
		HIC2877	40 mA @ 11.2 VDC, Test P. Immunity	SIL 3	1	HiCTB32-TRI-DOISS-EL-PL-Y1	32	32
		HIC2883	45 mA @ 12 VDC, Test P. Immunity, LFT	SIL 3	1	HiCTB32-TRI-DOISS-EL-PL-Y1	32	32
		HIC5861	Safety Relay DTS, Non-IS, LFT	SIL 3	1	HiCTB32-TRI-DOISS-EL-PL-Y2	32	32
		HIC5863	Safety Relay ETS, Non-IS, LFT	SIL 3	1	HiCTB32-TRI-DOISS-EL-PL-Y3	32	32
		Analog Input						
3700A (32) 3701 (32) 3721 (32) 3704E (64)	16 + 16 32 + 32	HIC2025		SIL 2	1	HiCTB16-TRI-AIIS-EL-PL	16	16
		HIC2025Y1		SIL 2	1	HiCTB16-TRI-AIIS-EL-PL	16	16
		HIC2025A	for Fire Detectors (I ₀ = 93 mA)	SIL 3	1	HiCTB16-TRI-AIIS-EL-PL	16	16
		HIC2025ES		SIL 3	1	HiCTB16-TRI-AIIS-EL-PL	16	16
		HID2030		SIL 2	2	HiDTB08-TRI-AIISD-EL-PL	8	16
Temperature Input								
3700A (32) 3701 (32) 3721 (32)	16 + 16	HIC2081		SIL 2	1	HiCTB16-TRI-AIIS-EL-PL	16	16
		HID2082		SIL 2	2	HiDTB08-TRI-AIISD-EL-SC	8	16
	3703E (16)	16	HID2082		SIL 2	2	HiDTB08-TRI-AIISD-EL-PL	8
3704E (64)	32 + 32	HID2082		SIL 2	2	HiDTB08-TRI-AIISD-EL-SC	8	16
		HIC2081		SIL 2	1	HiCTB16-TRI-AIIS-EL-PL	16	16
Analog Output								
3805E (8)	8	HIC2031		SIL 2	1	HiCTB08-TRI-AOISS-EL-PL	8	8
		HIC2031ES		SIL 3	1	HiCTB08-TRI-AOISS-EL-PL	8	8

Your automation, our passion.

Explosion Protection

- Intrinsic Safety Barriers
- Signal Conditioners
- FieldConnex® Fieldbus Infrastructure
- Remote I/O Systems
- Electrical Explosion Protection Equipment
- Purge and Pressurization Systems
- HMI Systems
- Mobile Computing and Communications
- HART Interface Solutions
- Surge Protection
- Wireless Solutions
- Level Measurement

Industrial Sensors

- Proximity Sensors
- Photoelectric Sensors
- Industrial Vision
- Ultrasonic Sensors
- Rotary Encoders
- Positioning Systems
- Inclination and Acceleration Sensors
- Industrial Ethernet
- AS-Interface
- IO-Link
- Identification Systems
- Displays and Signal Processing
- Connectivity

www.schneider-electric.pepperl-fuchs.com
www.pepperl-fuchs.com

Subject to modifications · © Pepperl+Fuchs
Printed in the USA · Part. No. 915492 10/22 03



Pepperl+Fuchs Quality

Download our latest policy here:

www.pepperl-fuchs.com/quality